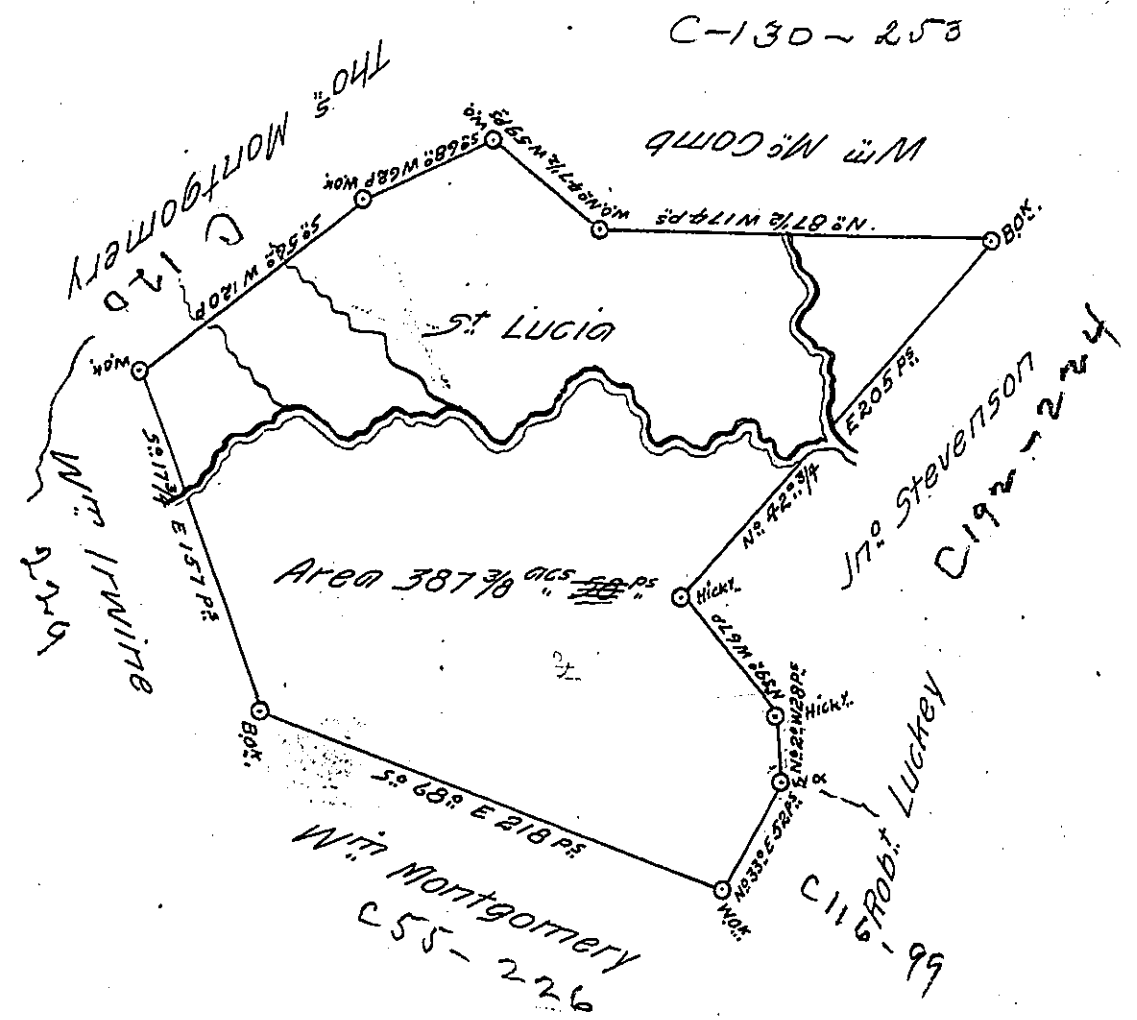


C-130-258



A draught of a survey called "St. Lucia" situate on the East Fork of Chartiers Cr. in Washington County containg 387<sup>acs</sup> 58<sup>P.S.</sup> and the usual allowance of 6 Pcent for highways &c executed July 11<sup>th</sup> 1786 in pursuance of a warr<sup>t</sup> granted to W<sup>m</sup> Montgomery for 400 acs dated Nov<sup>r</sup> 4<sup>th</sup> 1785

Jr<sup>o</sup> Lukens Esq<sup>r</sup> S. G. l. ~~Nov 15 1787~~ Presley Nevill }  
 Matt<sup>y</sup> Ritchie } D.S.

IN TESTIMONY that the above is a copy of the original remaining on file in the Department of Internal Affairs of Pennsylvania, made conformably to an Act of Assembly approved the 16th day of February, 1833, I have hereunto set my Hand and caused the Seal of said Department to be affixed at Harrisburg, this twenty third day of November 1905

*James P. Pennington*  
 Secretary of Internal Affairs.